

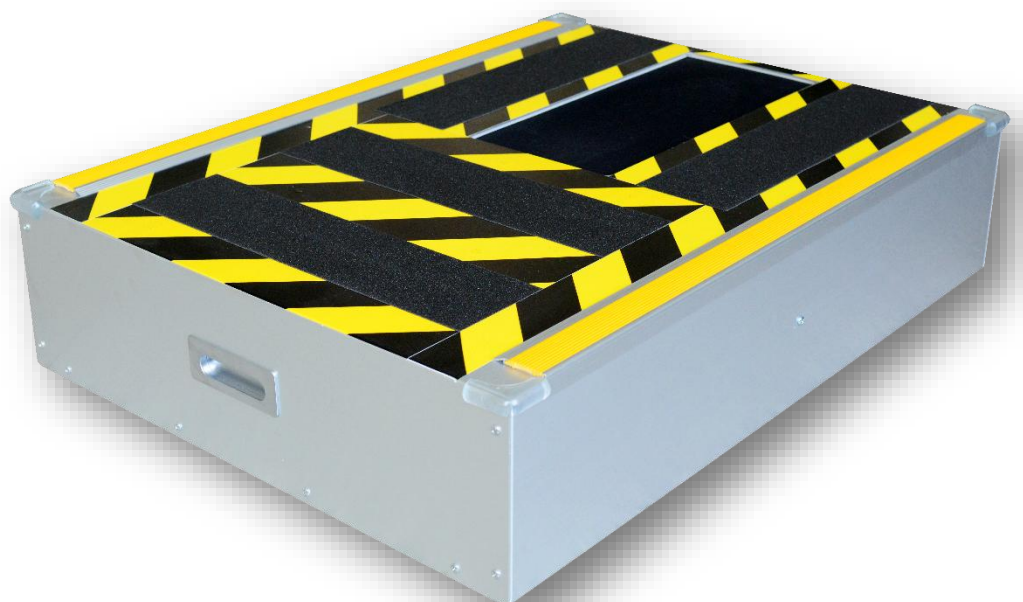
EverOS™ V1.0

Everspy Outsole Scanner (EverOS™)

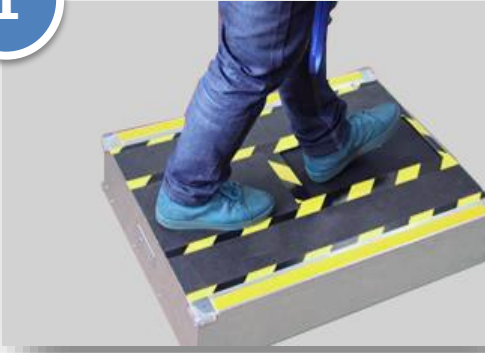
V1.0 is the first generation shoeprint scanner that captures suspect two-dimensional images, allowing officers to collect them at the detention unit.

The device is accompanied with an efficient software to save images right at your workstation.

The scanner is a perfect fit for your custody suite, detention unit, or forensic lab!



1



2



3



EverOS V1.0™ makes scanning shoeprints as easy as 1-2-3

Fast calibration and automatic saving

EverOS™ V1.0 is accompanied by a simple and efficient software that assured that images are easily calibrated on-site, automatically stored and quickly retrieved. The officer can then access, share, and update the black-and-white shoeprint images anytime. This solid device shortens the shoeprint collection from weeks to minutes.

EverOS™ V1.0 is the #1 seller in the UK

EverOS™ V1.0 proved to be most successful among UK police officers, satisfying the need to collect the shoeprint during booking at local custody suites.

Client feedback

"Burglary is at its lowest level for 40 years and EverOS™ will only further boost the police's crime-fighting ability and help keep communities even safer."

– Metropolitan Police Service, UK



| | |
|------------------|---------------------------------------------------------------------------------------------------------|
| Model | HR-YQ-III |
| Dimensions | (LWH) 800 x 590 x 180 mm |
| Output port | USB 3.0 |
| Power supply | 12 DC, 1A DC |
| Lighting | LED lighting with lifetime of over 20,000 hours |
| Image resolution | 300 DPI |
| Optical system | Image distortion: <0.2% |
| Acquisition area | (LW) 380 x 160 mm |
| Packaging | Portable aluminum case |
| Imaging | Moulded imaging is used for clear reflection of sole patterns and features of shoeprint pressure images |